

Stainless Steel

**ENDURO
STAINLESS
STEEL
ROLLERIZED
ROCKERS**



Made from 17-4PH stainless steel with 1025 heat-treating, these proven rollerized rockers feature premium, oversized needle bearings, sure-lock rocker nuts and alloy steel tip rollers. Superior lightweight body design provides plenty of clearance for large diameter springs (1.560"). Includes sure-locks.

Part No.	Description	Ratio	Stud
73645-16*	AMC 290-401 V8	1.6	3/8
73646-16*	AMC 290-401 V8	1.6	7/16
73648-12*	AMC 6 cyl.	1.6	3/8
73647-12*	AMC 6 cyl.	1.6	7/16
73625-8	Chevy II 4 cyl.	1.75	3/8
73628-12	Chevrolet 230 250 292 6cyl.	1.6	3/8
73629-12	Chevrolet 230 250 292 6 cyl.	1.75	3/8
73630-12	Chevrolet 230 250 292 6 cyl.	1.6	7/16
73631-12	Chevrolet 230 250 292 6 cyl.	1.75	7/16
73649-12	Chevrolet 200 229 90° V6	1.6	3/8
73650-12	Chevrolet 200 229 90° V6	1.5	7/16
73651-12	Chevrolet 200 229 90° V6	1.65	7/16
73652-12	Chevrolet 200 229 90° V6	1.6	7/16
73635-16	Chevrolet 265-400 V8	1.35	7/16
73600-16	Chevrolet 265-400 V8	1.5	3/8
73660-16	Chevrolet 265-400 V8 LT1	1.5	3/8
73640-16	Chevrolet 265-400 V8	1.6	3/8
73661-16	Chevrolet 265-400 V8 LT1	1.6	3/8
73670-16	Chevrolet 265-400 V8	1.65	3/8
73601-16	Chevrolet 265-400 V8	1.5	7/16
73641-16	Chevrolet 265-400 V8	1.6	7/16
73671-16	Chevrolet 265-400 V8	1.65	7/16
73643-16	Chevrolet 265-400 V8	1.7	7/16
73604-16	Chevrolet 396-454 V8	1.55	7/16
73606-16	Chevrolet 396-454 V8	1.6	7/16
73605-16	Chevrolet 396-454 V8	1.7	7/16
73607-16	Chevrolet 396-454 V8	1.75	7/16
73608-16	Chevrolet 396-454 V8	1.8	7/16
73609-16	Ford 289 302 351W V8	1.6	3/8
73610-16	Ford 289 302 351W V8	1.65	3/8
73611-16	Ford 289 302 351W V8	1.7	3/8
73612-16	Ford 289 302 351W V8	1.6	7/16
73613-16	Ford 289 302 351W V8	1.65	7/16
73614-16	Ford 289 302 351W V8	1.7	7/16
73637-16	Ford 289 302 351W V8	1.75	7/16
73638-16	Ford 289 302 351W V8	1.8	7/16
73618-16	Ford Boss 351C 400 429 460	1.6	7/16
73616-16	Ford Boss 351C 400 429 460	1.65	7/16
73615-16	Ford Boss 351C 400 429 460	1.73	7/16
73617-16	Ford Boss 351C 400 429 460	1.75	7/16
73619-16	Ford Boss 351C 400 429 460	1.8	7/16
73626-16	Pontiac V8	1.5	3/8
73622-16	Pontiac V8	1.6	3/8
73627-16	Pontiac V8	1.5	7/16
73623-16	Pontiac V8	1.6	7/16
73624-16	Pontiac V8	1.65	7/16
73644-16*	Oldsmobile 67-91 V8 V8	1.6	7/16

* Requires machine work Note: Rocker arms can be purchased in 1/2 sets (8 intake and 8 exhaust for split ratio applications) or individually Note: Specify stud 88400 (3/8) or 88401 (7/16) when ordering.

Stud-Mount Rocker Arms

**Needle Bearing
Tip Option
available for all stainless,
aluminum stud & shaft
mounted rocker arms!**

Crower's self-aligning rocker arms are available for late model small and big block Chevrolet, Dodge Magnum truck and the V10 Viper.

Features include:

- Self-aligning roller tip holds rocker in place
- 25 hp, 4 mph on 1/4 mile with 1.7's on V10
- Emissions Legal certified ARB #D-410



**ENDURO
LONG ARM/
BACKSET
ROLLERIZED
ROCKERS**



Crower's Long Arm/Backset trunnion rollerized rockers are made to the same high tolerances as our standard stainless steel rocker arms with a .090" backset trunnion and these added features:

- Increased area under the lift curve
- Additional spring clearance (1.650")
- Smoother valve action
- Less side loading on stems/guides
- Drop on installation
- Set of 8 for intake (use standard Crower stainless steel rockers on exhaust)

Part No.	Description	Ratio	Stud
73677-8	Chevrolet 265-400 V8	1.5	7/16
73674-8	Chevrolet 265-400 V8	1.6	7/16
73672-8	Chevrolet 265-400 V8	1.65	7/16
73673-8	Chevrolet 265-400 V8	1.7	7/16
73676-8	Chevrolet 265-400 V8	1.75	7/16
73675-8	Chevrolet 265-400 V8	1.8	7/16
73678-8	Chevrolet 265-400 V8	1.85	7/16
73679-8	Chevrolet 265-400 V8	1.9	7/16

Note: May be purchased as mixed ratios intake and exhaust.



STAMPED STEEL ROCKER ARMS

Crower's stamped steel rockers utilize a longer slot for high lift, aftermarket cams. Made from high strength steel alloy and stamped to resist the rocker flex for the longest possible operating life.

Part No.	Description	Ratio
73050-16	Chevrolet 265-400 (set 16)	1.5
73051-16	Chevrolet 265-400 (set 16)	1.6
73053	Chevrolet 265-400 (8 ea/8 ea) Kit	1.5/1.6
73052-16	Chevrolet 396-454 (set 16)	1.7

Note: For small block Chevrolet, a 1.6 ratio will raise gross valve lift for a nominal horsepower increase. All rockers listed are 3/8 stud.

LATE MODEL ROCKERS

Part No.	Description	Ratio	Stud
73602-12	V6 Chevy 85-96, 97-98 Vortec	1.5	3/8
73603-12	V6 Chevy 85-96, 97-98 Vortec	1.6	3/8
73602-16	SB Chevy 85-96, 97-98 Vortec, LT1	1.5	3/8
73603-16	SB Chevy 85-96, 97-98 Vortec, LT1	1.6	3/8
73660-16	SB Chevy Narrow, Non Align	1.5	3/8
73661-16	SB Chevy Narrow, Non Align	1.6	3/8
73608-16	BB Chevy 85-96, 97-98 Vortec	1.8	7/16
73653K*	V6 Dodge Magnum	1.6	3/8
73654K*	V6 Dodge Magnum	1.7	3/8
73655K*	V8 Dodge Magnum	1.6	3/8
73656K*	V8 Dodge Magnum	1.7	3/8
73657K*	V10 Dodge Magnum	1.6	3/8
73659K*	V10 Dodge Magnum	1.7	3/8
73662K*	V10 Dodge Viper	1.6	7/16
73663K*	V10 Dodge Viper	1.7	7/16

* "K" incl. rocker studs. 5500 RPM limit on "K" kits (6300 on Viper)

DODGE MAGNUM

ROLLER ROCKER KITS

Our "PK" kits are a must in order to maintain valve train integrity when RPM's over 5500 are reached. If sustained high RPM is expected, you must upgrade to 68305X1 spring. "PK" kits include rocker studs, guide plates (#70518) & 1 pc. pushrods (#69695).

Part No.	Description	Ratio	Stud
73653PK*	V6 Dodge Magnum	1.6	3/8
73654PK*	V6 Dodge Magnum	1.7	3/8
73655PK*	V8 Dodge Magnum	1.6	3/8
73656PK*	V8 Dodge Magnum	1.7	3/8

ENDURO CENTERLINE ROLLERIZED ROCKERS

When installing a .100" long valve, the rocker arm tip must be backed up .050" to insure centerline contact at half lift. Crower offsets the rocker stud hole in the trunnion, pulling the rocker tip back into correct alignment with the valve stem. Re-establishing correct geometry reduces valve guide wear and promotes more accurate valve timing.



Part No.	Description	Ratio
73690-16	Chevrolet 265-400 (set 16).050 backset	1.5
73691-16	Chevrolet 265-400 (set 16).050 backset	1.55
73692-16	Chevrolet 265-400 (set 16).050 backset	1.6
73693-16	Chevrolet 265-400 (set 16).050 backset	1.65
73694-16	Chevrolet 265-400 (set 16).050 backset	1.7
73696-16	Chevrolet 265-400 (set 16).050 backset	1.75
73695-16	Chevrolet 265-400 (set 16).050 backset	1.8
73682-16	Chevrolet 396-454 (set 16).050 backset	1.65
73683-16	Chevrolet 396-454 (set 16).050 backset	1.7
73684-16	Chevrolet 396-454 (set 16).050 backset	1.75
73685-16	Chevrolet 396-454 (set 16).050 backset	1.8
73686-16	Chevrolet 396-454 (set 16).090 backset	1.65
73687-16	Chevrolet 396-454 (set 16).090 backset	1.7
73688-16	Chevrolet 396-454 (set 16).090 backset	1.75
73689-16	Chevrolet 396-454 (set 16).090 backset	1.8

The above rockers may be purchased in sets of 8 to mix ratios. Note: 7/16 stud diameter.

NEEDLE BEARING TIP OPTION

All Crower stud and shaft mount rocker arms are available with Crower's new needle bearing roller tip option. Results are greatly reduced friction for added horsepower and reduced valve guide and valve stem wear. The lighter tip delivers greater valve control for increased rpm and improves valve spring longevity by decreasing heat over traditional non needle designs. **Specify #73715R option for stainless steel (stud or shaft) or #72915R option for aluminum (stud or shaft) when ordering rocker arms. Not available on self-aligning tip designs.**



For technical support call 619-661-6477 • Some products listed are not legal for sale or use on emission controlled motor vehicles

www.crower.com

Stud-Mounted Rocker Arms

Aluminum

ALUMINUM STUD ROLLERIZED ROCKERS



Crower's Enduro aluminum stud mount rocker arms are fully CNC machined from USA made, premium aluminum extrusion. Crower's unique "full arch" design reduces the rocker flex found in other brands. Results are increased rpm, greater area under the lift curve and added spring clearance (1.625"). Double-step, serrated pins feature our rotor clip design that eliminates pin loosening. USA made needle bearings. When vertical valve cover clearance is an issue, specify "LP" when ordering.

Part No.	Description	Ratio	Stud
72845-16*	AMC 290-401 V8	1.6	3/8
72846-16*	AMC 290-401 V8	1.6	7/16
72848-12*	AMC 6 cyl.	1.6	3/8
72847-12*	AMC 6 cyl.	1.6	7/16
72825-8	Chevy II 4 cyl.	1.75	3/8
72828-12	Chevrolet 230 250 292 6cyl.	1.6	3/8
72829-12	Chevrolet 230 250 292 6 cyl.	1.75	3/8
72830-12	Chevrolet 230 250 292 6 cyl.	1.6	7/16
72831-12	Chevrolet 230 250 292 6 cyl.	1.75	7/16
72850-12	Chevrolet 200 229 90° V6	1.5	7/16
72852-12	Chevrolet 200 229 90° V6	1.6	7/16
72854-12	Chevrolet 200 229 90° V6	1.65	7/16
72835-16	Chevrolet 265-400 V8	1.35	7/16
72800-16	Chevrolet 265-400 V8	1.5	3/8
72840-16	Chevrolet 265-400 V8	1.6	3/8
72870-16	Chevrolet 265-400 V8	1.65	3/8
72801-16	Chevrolet 265-400 V8	1.5	7/16
72841-16	Chevrolet 265-400 V8	1.6	7/16
72871-16	Chevrolet 265-400 V8	1.65	7/16
72843-16	Chevrolet 265-400 V8	1.7	7/16
72804-16	Chevrolet 396-454 V8	1.55	7/16
72806-16	Chevrolet 396-454 V8	1.6	7/16
72805-16	Chevrolet 396-454 V8	1.7	7/16
72807-16	Chevrolet 396-454 V8	1.75	7/16
72808-16	Chevrolet 396-454 V8	1.8	7/16
72809-16	Ford 289 302 351 W V8	1.6	3/8
72810-16	Ford 289 302 351W V8	1.65	3/8
72811-16	Ford 289 302 351W V8	1.7	3/8
72832-16	Ford 289 302 351W-351-N V8	1.5	7/16
72833-16	Ford 289 302 351W 351-N V8	1.55	7/16
72812-16	Ford 289 302 351W 351-N V8	1.6	7/16
72813-16	Ford 289 302 351W 351-N V8	1.65	7/16
72814-16	Ford 289 302 351W 351-N V8	1.7	7/16
72837-16	Ford 289 302 351W 351-N V8	1.75	7/16
72838-16	Ford 289 302 351W 351-N V8	1.8	7/16
72818-16	Ford Boss 351C 400 429 460	1.6	7/16
72816-16	Ford Boss 351C 400 429 460	1.65	7/16
72815-16	Ford Boss 351C 400 429 460	1.73	7/16
72817-16	Ford Boss 351C 400 429 460	1.75	7/16
72819-16	Ford Boss 351C 400 429 460	1.8	7/16
72826-16	Pontiac V8	1.5	3/8
72822-16	Pontiac V8	1.6	3/8
72827-16	Pontiac V8	1.5	7/16
72823-16	Pontiac V8	1.6	7/16
72824-16	Pontiac V8	1.65	7/16
72844-16	Oldsmobile 67-91 V8	1.6	7/16

* Requires machine work

ALUMINUM CENTERLINE ROLLERIZED ROCKERS



When installing a .100" long valve, the rocker arm tip must be backed up .050" to ensure centerline contact at half lift. Crower offsets the rocker stud hole in the trunnion, pulling the rocker tip back into correct alignment with the valve stem. Re-establishing correct geometry reduces valve guide wear and promotes more accurate valve timing.

Part No.	Description	Ratio	Stud
72890-8	Chevrolet 265-400 V8 (set 8)	1.5	7/16
72891-8	Chevrolet 265-400 V8 (set 8)	1.55	7/16
72892-8	Chevrolet 265-400 V8 (set 8)	1.6	7/16
72893-8	Chevrolet 265-400 V8 (set 8)	1.65	7/16
72894-8	Chevrolet 265-400 V8 (set 8)	1.7	7/16
72896-8	Chevrolet 265-400 V8 (set 8)	1.75	7/16
72895-8	Chevrolet 265-400 V8 (set 8)	1.8	7/16
72897-8	Chevrolet 396-454 V8 (set 8)	1.7	7/16
72898-8	Chevrolet 396-454 V8 (set 8)	1.8	7/16

The above rockers come in sets of 8 to mix ratios.

OFFSET ALUMINUM INTAKE ROCKERS



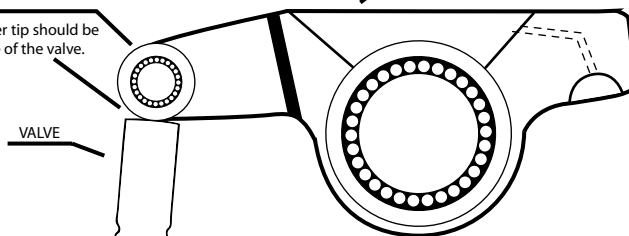
Crower has a .150" offset aluminum rocker available in 7/16" stud diameter only. These rockers include the same features as our Enduro Aluminum rockers, but in an offset design. Order only for the intake and then 8 only standard stud mount rockers on the exhaust (see p/n at left).

Part No.	Description	Ratio	Stud
72801X1-8	Chevrolet 265-400 V8	1.5	7/16
72841X1-8	Chevrolet 265-400 V8	1.6	7/16
72871X1-8	Chevrolet 265-400 V8	1.65	7/16
72812X1-8	Ford 351-N V8	1.6	7/16
72813X1-8	Ford 351-N V8	1.65	7/16
72814X1-8	Ford 351-N V8	1.7	7/16
72837X1-8	Ford 351-N V8	1.75	7/16
72838X1-8	Ford 351-N V8	1.8	7/16

Note: These rockers come 8 only for the intake side. You must order 8 only standard design rockers for the exhaust side.

NEEDLE BEARING TIP OPTION

1/2 Valve lift roller tip should be on the middle of the valve.



BREAK-IN ALUMINUM ROLLERIZED ROCKERS

Reduce cam and lifter break-in failures by running Crower's new break-in rocker arms first. Features a reverse offset trunnion (.050") that repositions the pushrod closer to the stock position. In other words, Crower moves the rocker arm and pushrod forward .050" for easier installation. Current break-in rockers on the market only offer center trunnion stud hole positions that require extensive cylinder head modifications to the pushrod hole in order to achieve proper pushrod and head clearance. Crower's break-in rockers drop on with no machine work required. Spring pockets machined for 1.560" O.D. spring

Part No.	Description	Ratio	Stud
72881-16	Chevrolet 265-400 V8	1.2	7/16
72886-16	Chevrolet 265-400 V8	1.35	7/16
72882-16	Chevrolet 396-454 V8	1.4	7/16
72884-16	Ford 289 302 351W V8	1.3	7/16
72885-16	Ford 351C V8	1.33	7/16

Example A

.350 Lobe Lift
x 1.7 Rocker Ratio
.595 Gross Lift
-.020 Lash
.575 Net Valve Lift

Example B

As you can see in example (A), net valve lift is .575" and example (B) is .400" net. Depending on spring rate, this could be as much as 100 lbs. or more reduced open pressure.

As you can see in example (A), net valve lift is .575" and example (B) is .400" net. Depending on spring rate, this could be as much as 100 lbs. or more reduced open pressure.

NEEDLE BEARING TIP OPTION

All Crower stud and shaft mount rocker arms are available with Crower's new needle bearing roller tip option. Results are greatly reduced friction for added horsepower and reduced valve guide and valve stem wear. The lighter tip delivers greater valve control for increased rpm and improves valve spring longevity by decreasing heat over traditional non needle designs. Specify #73715R option for stainless steel (stud or shaft) or #72915R option for aluminum (stud or shaft) when ordering rocker arms. Not available on self-aligning tip designs.



Accessories

Stud-Mounted Rocker Arms

SURELOCK ROCKER NUTS

Made from high quality, heat-treated chromoly steel, Crower sure lock nuts allow for precise adjustments. Includes nuts, Allen head set screws.

Part No.	Stud Dia.	Shank Dia.	Engine
86050-16	7/16	.600"	V8
86050S-16	7/16	.600"	V8
86051-16	3/8	.530"	V8
86051S-16	3/8	.530"	V8
86052-12	3/8	.530"	6 cyl
86053-16	3/8	-	Pontiac

"S" indicates short (.865") design for valve cover clearance. Std = 1.060"



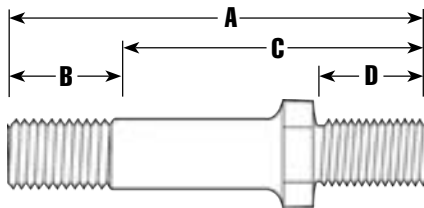
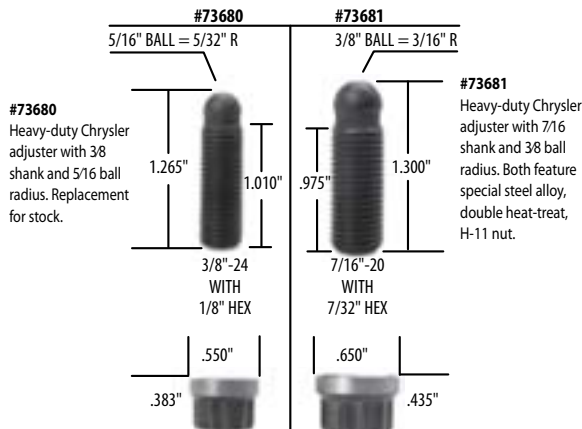
Small Block Chevy

CROWBAR STUD GIRDLES

Eliminate high rev stud flex and increase your overall horsepower with the Crower "CrowBar" stud girdle. "Crowbar" stud girdles utilize a unique clamping design engineered for quick and easy adjustments or removal with just one wrench. Precision CNC machined from premium 6061T6 aluminum provides true bolt-on installation. Comes complete with the highest quality adjusting nuts that feature a 9/16 hex with premium locking set screw for positive rocker arm adjustment.

Part No.	Description	Stud Dia.
73911	Chevrolet 265-400 (stock, Cast Iron Bowtie, Brodix)	3/8
73901	Chevrolet 265-400 (Stock, Bowtie, Brodix Trk1, AFR 180-210, Edelbrock)	7/16
73905	AFR 220	7/16
73904	Brodix, 40/60 w/relocated studs	7/16
73951	Chevrolet 396-454 (Stock)	7/16
73952	Chevrolet 396-454 (.250" long valves)	7/16
73955	Dart BBC "D" series w/relocated studs	7/16
73960	Ford 351C	7/16
73965	Ford 351N	7/16
73961	Ford 460 (Cast iron, Cobra Jet)	7/16
73962	Ford 460 (TFS/SVO)	7/16

ROCKER ADJUSTERS



ALLOY ROCKER STUDS

Crower screw-in rocker studs are rated to 190,000 p.s.i. tensile strength and insure reliability in your valve train. Machined and finished from 8740 aircraft quality steel and heat-treated for maximum strength. All threads are cold rolled for concentricity and extreme durability.

Part No.	Description	Stud Dia.
88419-12	Chevrolet 60° V6 2.8-3.1 (80-94)	3/8 top, 10mm bottom
88400-16	Chevrolet 265-400	3/8 top, 7/16 bottom A=2.430" B=0.680" C=1.750" D=0.800"
88402L	Chevrolet 396-454 (Alum Heads)	7/16 Int: A=2.825" B=0.815" C=1.900" D=1.000" Exh: A=3.310" B=1.300" C=2.010" D=1.030"
88401-16	Chev 265-400 & 396-454	7/16 A=2.650" B=0.750" C=1.900" D=0.650"
88405-8	Chevrolet 396-454 (Alum Hds Ex. only)	7/16 A=3.310" B=1.300" C=2.010" D=1.030"
88425-16	Chevrolet (Special appl. +.250")	7/16 A=2.825" B=.815" C=1.900" D=1.000"
88418-16	Chev Late Mod/Mark V	7/16 top, 3/8 bot* A=2.650" B=0.750" C=1.900" D=1.000"
88401-16	Ford 302, 351C	7/16 A=2.650" B=0.750" C=1.900" D=0.650"
88416-16	Dodge Magnum V8	3/8 top, 5/16 bot A=2.430" B=0.700" C=1.760" D=0.800"
88416-20	Dodge V10 Truck	3/8 top, 5/16 bot A=2.430" B=0.700" C=1.760" D=0.800"
88417-20	Dodge Viper V10	7/16 top, 3/8 bot A=2.450" B=0.750" C=1.700" D=0.800"

*Must reuse factory guide plates with 3/8 mounting hole.

STUD GIRDLE LOCK-NUT ADJUSTERS

Designed for use with Crower's "CrowBar" stud girdles. Made from high strength steel alloy and heat treated for added durability. These aircraft quality adjusting nuts feature a premium hex with locking set screw to provide positive rocker arm adjustment. Our 3/8 screw-in rocker stud adjuster and the 7/16 screw-in rocker stud adjuster has a 9/16 hex. Specify quantity.

Part No.	Description	Fits Stud Dia.
73934-16	SBC (all) & BBC exhaust (short)	7/16
73935-8	BBC Intake only (long)	7/16
73936-16	All 3/8 stud applications	3/8

CROWBAR REPLACEMENT PARTS

Part No.	Description
73932	Clamp bolt, SBC stud girdles
73933	Washer, SBC stud girdles
73937-1	Clamp bolt, BBC stud girdles
73938-1	Washer, BBC stud girdles
73939-1	Spring, BBC stud girdles
73921	Stud girdle bar, 1 only* for 73901 & 73911
73924	Stud girdle bar, 1 only* for 73904
73929	Stud girdle bar, 1 only* for 73909
73941	Stud girdle bar, 1 only* for 73951
73942	Stud girdle bar, 1 only* for 73952
73945	Stud girdle bar, 1 only* for 73955
73970	Stud girdle bar, 1 only* for 73960
73971	Stud girdle bar, 1 only* for 73961
73972	Stud girdle bar, 1 only* for 73962
73975	Stud girdle bar, 1 only* for 73965

*Replacement bar is for one side (one head) only. No adjusters, all other hardware included.



Big Block Chevy